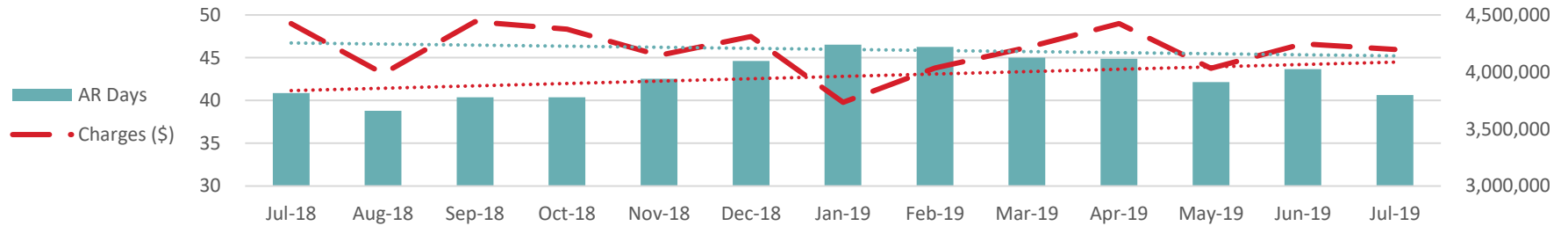


Get Well Clinic

Key Metrics

Metric*	Benchmark	Aug-18	Sep-18	Oct-18	Nov-18	Dec-18	Jan-19	Feb-19	Mar-19	Apr-19	May-19	Jun-19	Jul-19	12m Avg.
Charge Lag - Office (DOS - Entry)	2 days	0.5	0.6	0.7	0.5	0.1	1.0	0.2	0.2	0.9	0.6	2.5	0.4	<b>0.7</b>
Charge Lag - Other (DOS - Entry)	5 days	14.6	7.5	11.6	12.4	9.8	10.4	11.9	12.0	10.8	10.3	10.6	12.1	<b>11.2</b>
Patients		4,473	3,988	4,414	4,080	3,894	4,030	3,661	4,050	4,090	4,187	3,975	4,200	<b>4,087</b>
New Patient Visits	15.0%	18.8%	20.3%	18.2%	16.6%	16.7%	19.1%	18.1%	18.4%	19.2%	18.6%	17.9%	18.3%	<b>18.4%</b>
Edits	4.0%	21.2%	22.4%	16.8%	17.7%	17.4%	20.1%	15.2%	14.2%	14.3%	14.4%	16.1%	2.2%	<b>16.0%</b>
Denied Charges (FP) (#)	5.0%	13.2%	11.1%	13.7%	10.9%	11.8%	12.7%	12.2%	11.9%	13.1%	13.3%	10.1%	12.0%	<b>12.2%</b>
Denied Charges (FP) (\$)	5.0%	8.5%	7.8%	10.0%	6.8%	8.5%	7.9%	8.7%	8.9%	9.9%	10.5%	7.5%	9.9%	<b>8.7%</b>
Unreconciled Appts.	<1%	0.2%	0.3%	0.1%	0.4%	0.2%	0.2%	0.0%	0.1%	0.1%	0.4%	0.3%	0.2%	<b>0.2%</b>
OTC Collections per Office Visit		\$16.77	\$14.57	\$15.88	\$15.42	\$14.25	\$24.44	\$17.99	\$18.65	\$16.71	\$16.45	\$16.30	\$17.39	<b>\$17.07</b>
100 % Write Offs		\$153,610	\$157,503	\$127,848	\$62,941	\$102,172	\$75,427	\$89,628	\$230,197	\$167,243	\$130,762	\$216,367	\$178,687	<b>\$141,032</b>

Debit AR



Metric*	Benchmark	Aug-18	Sep-18	Oct-18	Nov-18	Dec-18	Jan-19	Feb-19	Mar-19	Apr-19	May-19	Jun-19	Jul-19	12m Avg.
AR % > 60 Days	20.0%	48.1%	46.3%	45.8%	46.0%	49.6%	50.3%	50.9%	52.3%	51.9%	48.9%	46.0%	47.0%	<b>48.6%</b>
AR % > 60 Days (Insurance)	15.0%	46.1%	44.2%	43.3%	42.5%	46.3%	47.4%	48.0%	49.4%	48.6%	45.0%	41.7%	42.8%	<b>45.4%</b>
AR % > 60 Days (Patient)		78.3%	75.3%	73.0%	83.8%	87.3%	85.0%	82.4%	83.0%	87.3%	87.5%	87.4%	80.7%	<b>82.6%</b>
AR Days	40 days	39	40	40	43	45	47	46	45	45	42	44	41	<b>43</b>
AR Days (Insurance)		37	38	37	39	41	43	43	42	41	39	40	37	<b>40</b>

Upcoming Appts

Patients with Financial History

	Aug-19	Sep-19	Oct-19+
Prev Bal Appts	177	0	0
Prev Bal	\$156,756	\$0	\$0
Bad Debt Appts	35	12	0

Insurance AR

Aged by Last Insurance Event Date

	0-60	61-180	181+
Debit AR Bal	\$3,163,889	\$661,419	\$1,106,908
Ins. Pay. and UCR	\$288,328	\$203,278	\$367,087
Ins. Pay. No UCR	\$55,293	\$9,085	\$18,521

Self-Pay AR

Aged by Last Self-Pay Event Date

	0-60	61-180	181+
Debit AR Bal	\$262,279	\$84,998	\$257,567
Self Pay Primary	\$43,212	\$4,847	\$39,576
Self Pay Passthrough	\$219,067	\$80,151	\$217,991