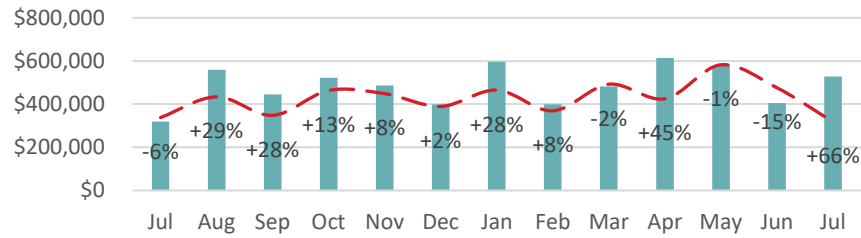
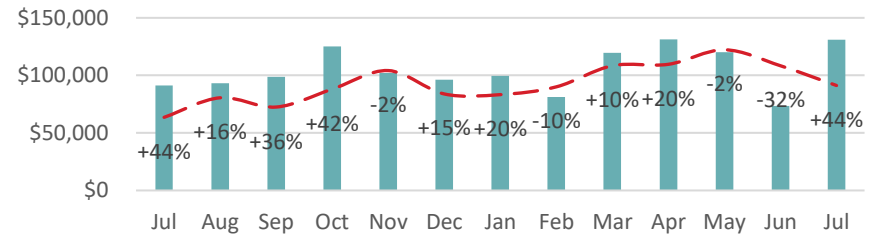


Provider 1

Charges vs. Last Year

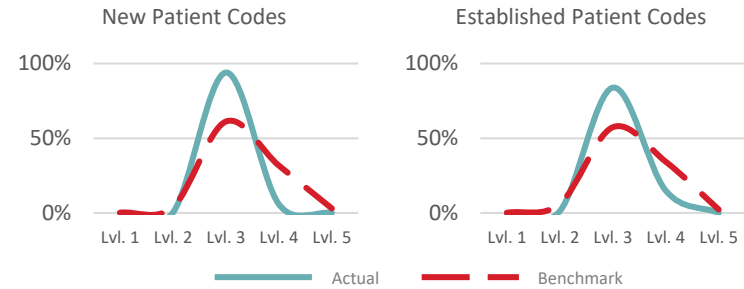


Payments vs. Last Year

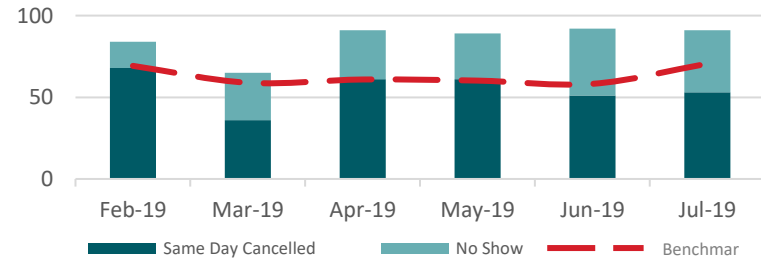


| Metric* | Feb-19 | Mar-19 | Apr-19 | May-19 | Jun-19 | Jul-19 |
|------------------------|-----------|-----------|-----------|-----------|-----------|-----------|
| Visits (#) | 676 | 913 | 1,002 | 931 | 707 | 931 |
| New Patient Visits (#) | 80 | 130 | 128 | 115 | 57 | 108 |
| Charges (\$) | \$399,677 | \$481,625 | \$614,650 | \$577,761 | \$405,698 | \$528,793 |
| Payments (\$) | \$81,353 | \$119,594 | \$131,367 | \$120,217 | \$73,407 | \$131,012 |
| OTC Collections (\$) | \$8,120 | \$13,663 | \$14,196 | \$9,443 | \$6,773 | \$14,675 |
| Charge Lag - Office | 0.0 | 0.4 | 1.1 | 0.1 | 3.7 | 0.6 |
| Charge Lag - Other | 8.8 | 3.2 | 4.2 | 5.0 | 12.9 | 4.2 |
| Unreconciled Appts. | 0.0% | 0.0% | 1.0% | 0.0% | 0.0% | 2.8% |
| Office Chg / Vis | \$316 | \$311 | \$311 | \$303 | \$317 | \$310 |
| Other Chg / Vis | \$3,638 | \$4,117 | \$4,148 | \$4,855 | \$3,883 | \$4,185 |
| AR Days | 56 | 51 | 50 | 47 | 50 | 48 |
| \$0 Balance GCR % | 20.8% | 22.9% | 21.3% | 22.2% | 20.0% | 22.2% |

E&M Bell Curve



Same Day Cancellations and No Shows



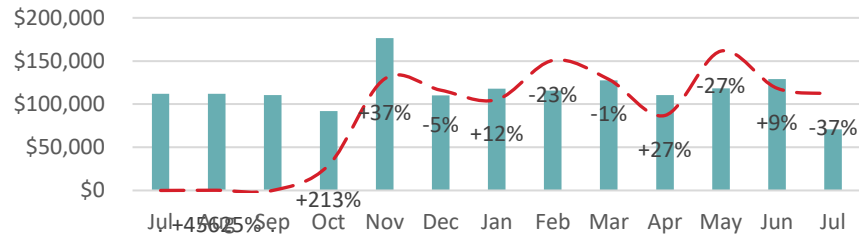
Open Denials



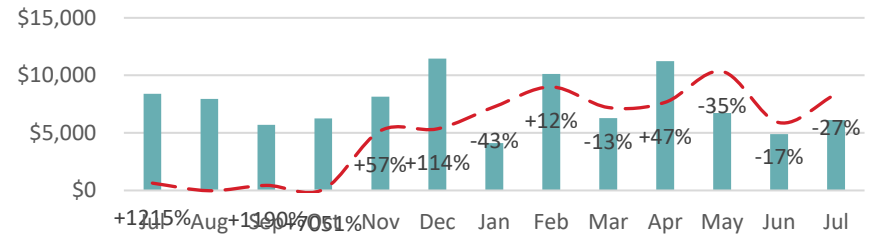
| Top 12 CPT Categories | Current Month | | Monthly Average | | Past 13 Months | |
|--------------------------|---------------|-----------|-----------------|-----------|----------------|-----------|
| | Chgs (\$) | Pmts (\$) | Chgs (\$) | Pmts (\$) | Chgs (\$) | Pmts (\$) |
| Surgery | \$258,632 | \$58,575 | \$238,057 | \$46,014 | \$3,094,739 | \$598,184 |
| Office Visits - EP | \$119,316 | \$28,864 | \$105,482 | \$23,551 | \$1,371,265 | \$306,168 |
| Office Visits - NP | \$59,113 | \$13,102 | \$56,654 | \$12,749 | \$736,504 | \$165,732 |
| Injections by MD | \$37,901 | \$9,033 | \$36,387 | \$8,206 | \$473,029 | \$106,676 |
| X-Ray | \$35,050 | \$6,520 | \$33,681 | \$6,949 | \$437,851 | \$90,333 |
| Orthotics | \$8,930 | \$3,726 | \$6,615 | \$3,823 | \$85,996 | \$49,702 |
| Injections Supplies Only | \$6,360 | \$5,464 | \$5,984 | \$2,521 | \$77,790 | \$32,770 |
| Hospital Visits | \$2,778 | \$216 | \$2,580 | \$422 | \$33,546 | \$5,484 |
| Ultrasound | \$689 | \$0 | \$821 | \$264 | \$10,675 | \$3,431 |
| Consultations | (\$734) | \$1,519 | \$575 | (\$217) | \$7,480 | (\$2,824) |
| Miscellaneous | \$374 | \$3,746 | \$189 | \$463 | \$2,453 | \$6,014 |
| ER | \$386 | \$247 | \$127 | \$34 | \$1,655 | \$436 |

Provider 2

Charges vs. Last Year

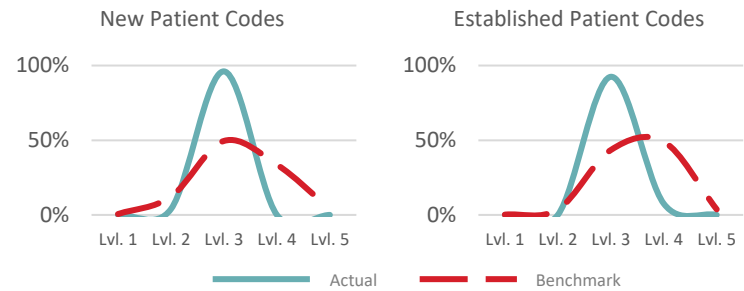


Payments vs. Last Year

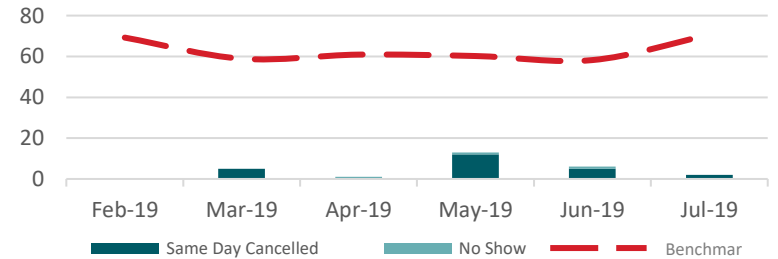


| Metric* | Feb-19 | Mar-19 | Apr-19 | May-19 | Jun-19 | Jul-19 |
|------------------------|-----------|-----------|-----------|-----------|-----------|----------|
| Visits (#) | 45 | 77 | 49 | 67 | 89 | 67 |
| New Patient Visits (#) | 5 | 11 | 7 | 11 | 20 | 20 |
| Charges (\$) | \$115,669 | \$127,733 | \$110,536 | \$118,313 | \$129,045 | \$70,702 |
| Payments (\$) | \$10,113 | \$6,290 | \$11,245 | \$6,737 | \$4,889 | \$6,125 |
| OTC Collections (\$) | \$0 | \$240 | \$150 | \$431 | \$445 | \$898 |
| Charge Lag - Office | 0.0 | 0.1 | 0.0 | 6.5 | 2.1 | 0.0 |
| Charge Lag - Other | 5.1 | 3.0 | 5.0 | 4.4 | 3.4 | 3.5 |
| Unreconciled Appts. | 0.0% | 0.0% | 0.0% | 0.0% | 0.0% | 0.0% |
| Office Chg / Vis | \$290 | \$299 | \$303 | \$351 | \$352 | \$313 |
| Other Chg / Vis | \$2,676 | \$2,527 | \$2,821 | \$2,721 | \$2,858 | \$2,800 |
| AR Days | 75 | 70 | 63 | 74 | 75 | 69 |
| \$0 Balance GCR % | 9.4% | 3.3% | 9.1% | 5.7% | 5.0% | 4.7% |

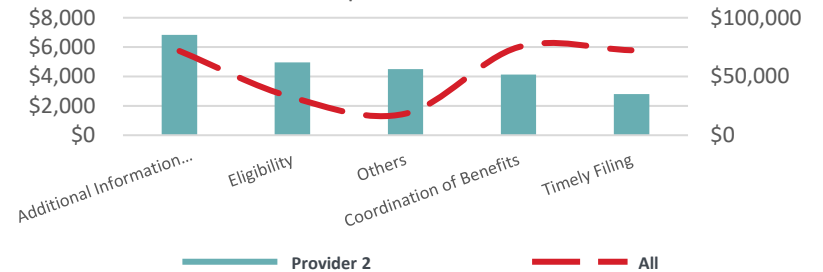
E&M Bell Curve



Same Day Cancellations and No Shows



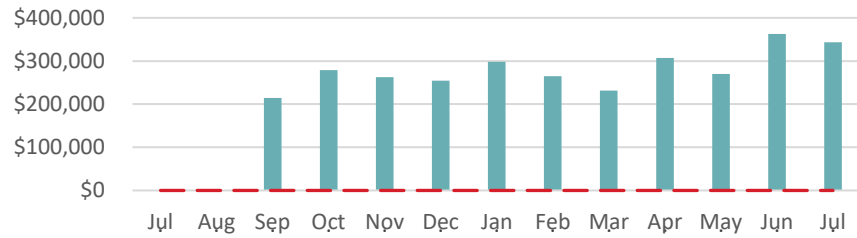
Open Denials



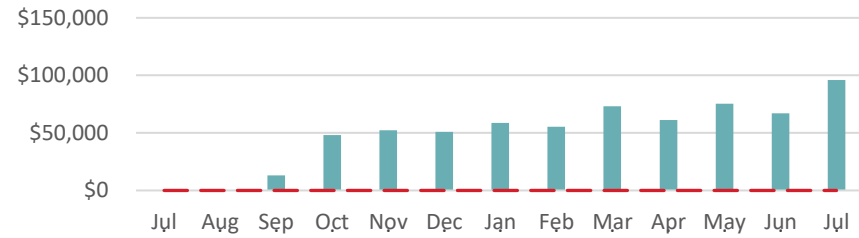
| Top 12 CPT Categories | Current Month | | Monthly Average | | Past 13 Months | |
|--------------------------|---------------|-----------|-----------------|-----------|----------------|-----------|
| | Chgs (\$) | Pmts (\$) | Chgs (\$) | Pmts (\$) | Chgs (\$) | Pmts (\$) |
| Surgery | \$54,435 | \$2,856 | \$102,079 | \$4,992 | \$1,327,025 | \$64,890 |
| Office Visits - NP | \$7,676 | \$1,804 | \$4,386 | \$786 | \$57,017 | \$10,213 |
| Hospital Visits | \$2,207 | \$439 | \$3,570 | \$653 | \$46,409 | \$8,494 |
| X-Ray | \$3,634 | \$455 | \$1,792 | \$282 | \$23,300 | \$3,669 |
| Office Visits - EP | \$2,639 | \$306 | \$1,706 | \$327 | \$22,178 | \$4,251 |
| Injections by MD | \$340 | \$68 | \$1,054 | \$177 | \$13,706 | \$2,297 |
| Orthotics | \$205 | \$14 | \$367 | \$156 | \$4,770 | \$2,025 |
| Consultations | (\$453) | \$0 | \$365 | \$42 | \$4,745 | \$542 |
| ER | \$0 | \$0 | \$226 | \$40 | \$2,939 | \$524 |
| Injections Supplies Only | \$20 | \$49 | \$68 | \$27 | \$890 | \$352 |
| Miscellaneous | \$0 | \$135 | \$0 | \$12 | \$6 | \$154 |
| -- | \$0 | \$0 | \$0 | \$0 | \$0 | \$0 |

Provider 3

Charges vs. Last Year

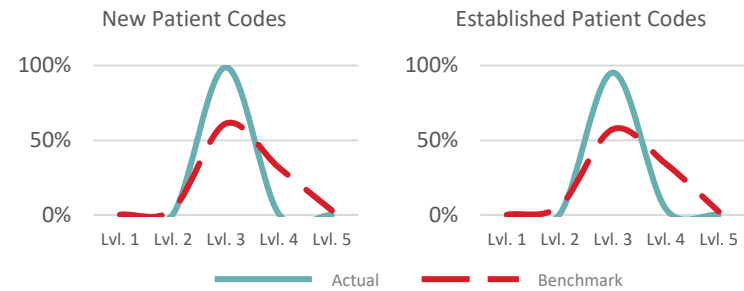


Payments vs. Last Year

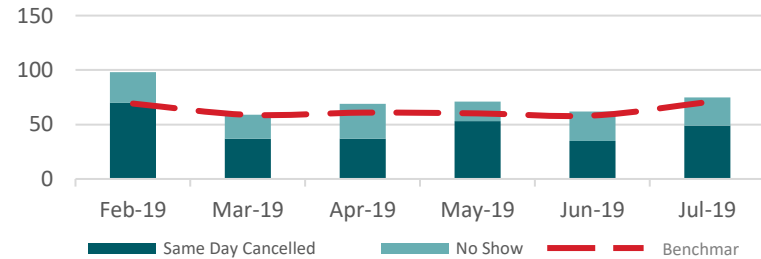


| Metric* | Feb-19 | Mar-19 | Apr-19 | May-19 | Jun-19 | Jul-19 |
|------------------------|-----------|-----------|-----------|-----------|-----------|-----------|
| Visits (#) | 539 | 515 | 662 | 594 | 713 | 723 |
| New Patient Visits (#) | 97 | 67 | 101 | 92 | 104 | 98 |
| Charges (\$) | \$264,870 | \$231,698 | \$307,027 | \$270,062 | \$362,501 | \$343,748 |
| Payments (\$) | \$55,362 | \$73,115 | \$61,321 | \$75,296 | \$67,133 | \$95,901 |
| OTC Collections (\$) | \$6,771 | \$5,809 | \$5,292 | \$6,169 | \$8,482 | \$9,683 |
| Charge Lag - Office | 0.8 | 0.4 | 3.0 | 0.4 | 0.8 | 0.7 |
| Charge Lag - Other | 4.2 | 3.1 | 3.6 | 3.5 | 3.8 | 4.2 |
| Unreconciled Appts. | 0.4% | 0.3% | 0.3% | 0.0% | 0.8% | 1.3% |
| Office Chg / Vis | \$344 | \$360 | \$350 | \$348 | \$342 | \$348 |
| Other Chg / Vis | \$3,955 | \$3,923 | \$3,940 | \$4,087 | \$3,380 | \$4,175 |
| AR Days | 36 | 31 | 36 | 33 | 39 | 33 |
| \$0 Balance GCR % | 21.6% | 23.8% | 21.6% | 26.6% | 26.1% | 24.9% |

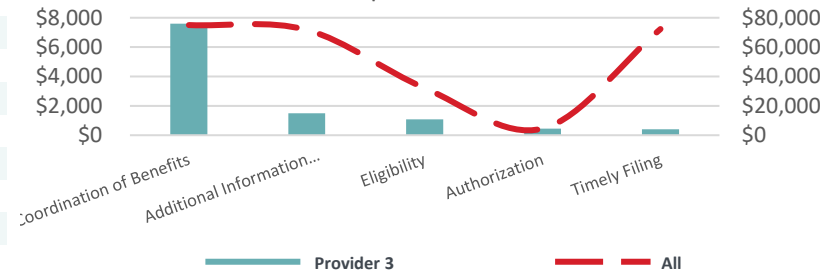
E&M Bell Curve



Same Day Cancellations and No Shows



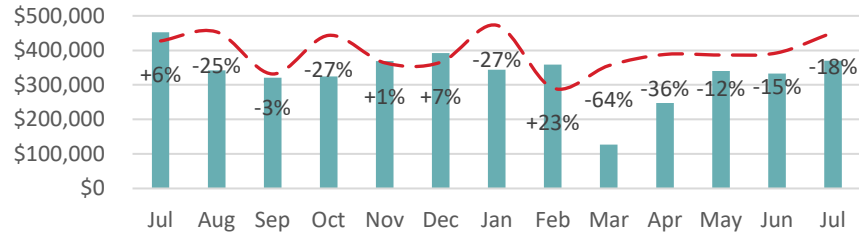
Open Denials



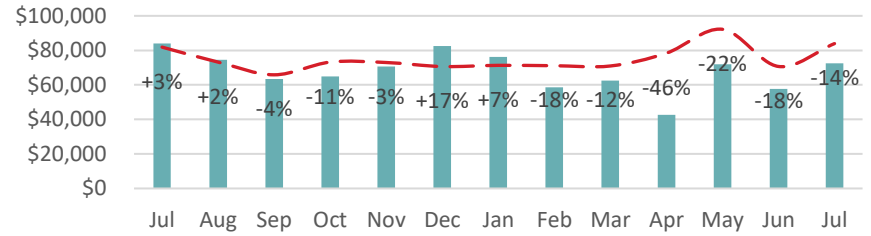
| Top 12 CPT Categories | Current Month | | Monthly Average | | Past 13 Months | |
|--------------------------|---------------|-----------|-----------------|-----------|----------------|-----------|
| | Chgs (\$) | Pmts (\$) | Chgs (\$) | Pmts (\$) | Chgs (\$) | Pmts (\$) |
| Surgery | \$95,439 | \$29,274 | \$81,760 | \$14,189 | \$899,357 | \$156,082 |
| Office Visits - EP | \$68,193 | \$17,501 | \$52,840 | \$10,796 | \$581,243 | \$118,756 |
| Office Visits - NP | \$54,549 | \$12,931 | \$51,887 | \$10,969 | \$570,758 | \$120,656 |
| Injections by MD | \$46,892 | \$10,834 | \$31,921 | \$6,483 | \$351,134 | \$71,308 |
| X-Ray | \$34,846 | \$7,027 | \$31,735 | \$5,351 | \$349,088 | \$58,865 |
| Injections Supplies Only | \$32,800 | \$11,753 | \$19,346 | \$7,410 | \$212,810 | \$81,505 |
| Orthotics | \$6,155 | \$4,123 | \$6,354 | \$3,055 | \$69,891 | \$33,607 |
| Hospital Visits | \$4,450 | \$1,516 | \$3,954 | \$691 | \$43,490 | \$7,601 |
| Consultations | (\$310) | (\$6) | \$737 | \$80 | \$8,111 | \$880 |
| ER | \$634 | \$0 | \$230 | \$36 | \$2,535 | \$393 |
| Miscellaneous | \$100 | \$947 | \$96 | \$163 | \$1,051 | \$1,793 |
| Supplies | \$0 | \$0 | \$0 | \$0 | \$5 | \$0 |

Provider 4

Charges vs. Last Year

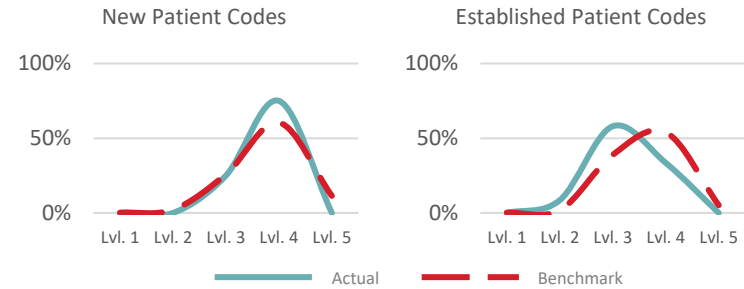


Payments vs. Last Year

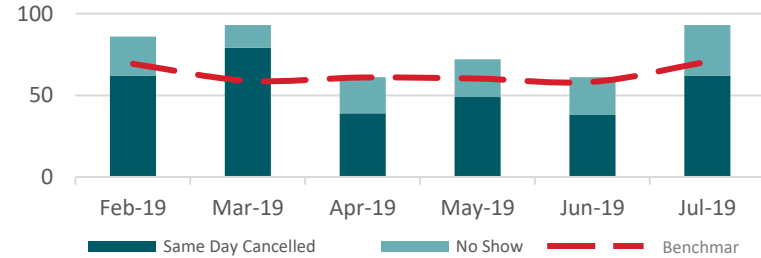


| Metric* | Feb-19 | Mar-19 | Apr-19 | May-19 | Jun-19 | Jul-19 |
|------------------------|-----------|-----------|-----------|-----------|-----------|-----------|
| Visits (#) | 544 | 230 | 419 | 527 | 473 | 600 |
| New Patient Visits (#) | 116 | 43 | 89 | 82 | 83 | 127 |
| Charges (\$) | \$358,548 | \$127,096 | \$247,382 | \$340,408 | \$332,909 | \$369,878 |
| Payments (\$) | \$58,629 | \$62,481 | \$42,585 | \$71,930 | \$57,628 | \$72,453 |
| OTC Collections (\$) | \$7,698 | \$3,330 | \$5,169 | \$6,143 | \$4,884 | \$7,200 |
| Charge Lag - Office | 0.1 | 0.2 | 0.0 | 0.9 | 0.5 | 0.2 |
| Charge Lag - Other | 1.0 | 3.1 | 1.1 | 1.1 | 1.0 | 0.8 |
| Unreconciled Appts. | 0.0% | 0.0% | 0.0% | 0.0% | 0.0% | 3.1% |
| Office Chg / Vis | \$534 | \$472 | \$493 | \$495 | \$554 | \$524 |
| Other Chg / Vis | \$1,566 | \$1,134 | \$1,488 | \$1,431 | \$1,644 | \$1,435 |
| AR Days | 39 | 26 | 34 | 32 | 38 | 39 |
| \$0 Balance GCR % | 19.9% | 23.2% | 20.6% | 20.9% | 20.7% | 19.9% |

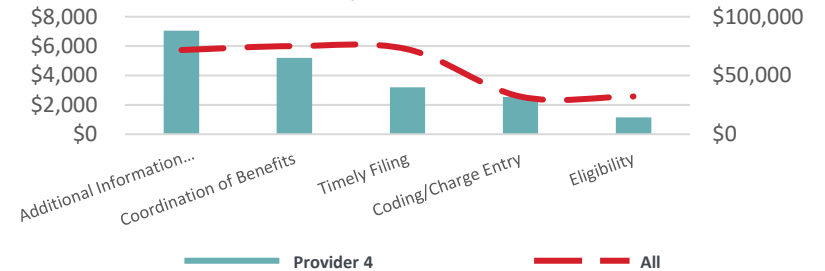
E&M Bell Curve



Same Day Cancellations and No Shows



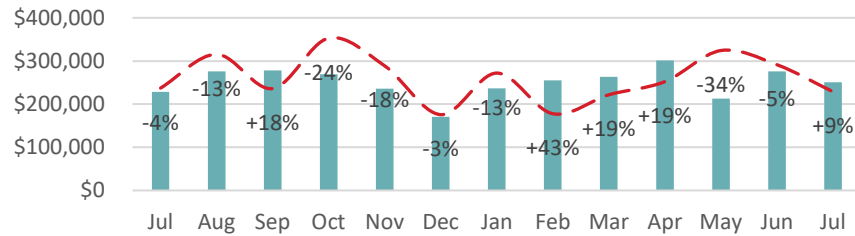
Open Denials



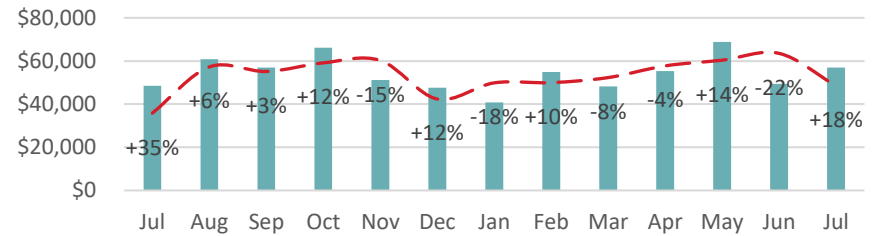
| Top 12 CPT Categories | Current Month | | Monthly Average | | Past 13 Months | |
|--------------------------|---------------|-----------|-----------------|-----------|----------------|-----------|
| | Chgs (\$) | Pmts (\$) | Chgs (\$) | Pmts (\$) | Chgs (\$) | Pmts (\$) |
| Surgery | \$94,993 | \$17,218 | \$107,010 | \$14,726 | \$1,391,130 | \$191,432 |
| Office Visits - EP | \$108,329 | \$21,209 | \$92,520 | \$20,807 | \$1,202,757 | \$270,492 |
| Office Visits - NP | \$97,485 | \$20,272 | \$75,129 | \$17,346 | \$976,677 | \$225,493 |
| Procedures | \$40,836 | \$5,484 | \$31,104 | \$7,039 | \$404,358 | \$91,506 |
| X-Ray | \$23,603 | \$4,417 | \$21,774 | \$4,472 | \$283,059 | \$58,142 |
| Orthotics | \$2,976 | \$1,756 | \$3,737 | \$2,654 | \$48,586 | \$34,501 |
| Consultations | \$0 | \$0 | \$378 | \$276 | \$4,911 | \$3,586 |
| Miscellaneous | \$265 | \$1,047 | \$295 | \$268 | \$3,830 | \$3,485 |
| Injections by MD | \$340 | \$0 | \$291 | \$46 | \$3,778 | \$602 |
| Legal | \$1,050 | \$1,050 | \$162 | \$162 | \$2,100 | \$2,100 |
| Injections Supplies Only | \$1 | \$0 | \$52 | \$16 | \$672 | \$213 |
| -- | \$0 | \$0 | \$0 | \$0 | \$0 | \$0 |

Provider 5

Charges vs. Last Year

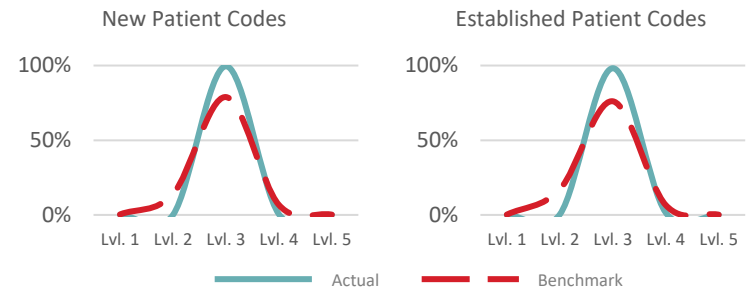


Payments vs. Last Year

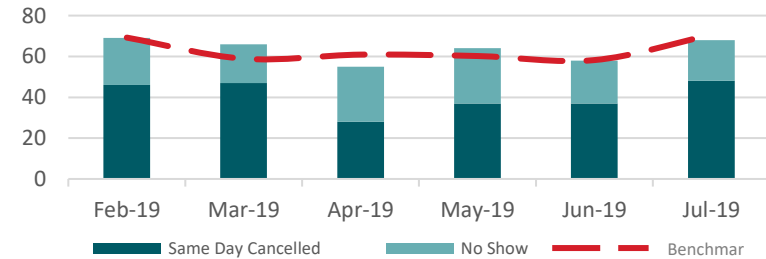


| Metric* | Feb-19 | Mar-19 | Apr-19 | May-19 | Jun-19 | Jul-19 |
|------------------------|-----------|-----------|-----------|-----------|-----------|-----------|
| Visits (#) | 562 | 641 | 699 | 588 | 677 | 597 |
| New Patient Visits (#) | 98 | 102 | 116 | 108 | 130 | 97 |
| Charges (\$) | \$254,939 | \$263,085 | \$300,872 | \$212,897 | \$275,961 | \$250,428 |
| Payments (\$) | \$54,933 | \$48,275 | \$55,339 | \$68,877 | \$49,427 | \$57,005 |
| OTC Collections (\$) | \$10,318 | \$7,256 | \$7,066 | \$8,854 | \$9,898 | \$8,358 |
| Charge Lag - Office | 0.1 | 0.6 | 2.7 | 1.5 | 0.5 | 0.0 |
| Charge Lag - Other | 5.1 | 4.5 | 4.0 | 2.7 | 5.3 | 6.1 |
| Unreconciled Appts. | 0.0% | 0.0% | 0.0% | 0.0% | 0.0% | 1.4% |
| Office Chg / Vis | \$344 | \$328 | \$371 | \$339 | \$358 | \$349 |
| Other Chg / Vis | \$3,574 | \$4,404 | \$3,832 | \$2,620 | \$3,434 | \$3,853 |
| AR Days | 49 | 54 | 54 | 40 | 43 | 41 |
| \$0 Balance GCR % | 20.7% | 21.1% | 20.6% | 20.9% | 20.9% | 21.2% |

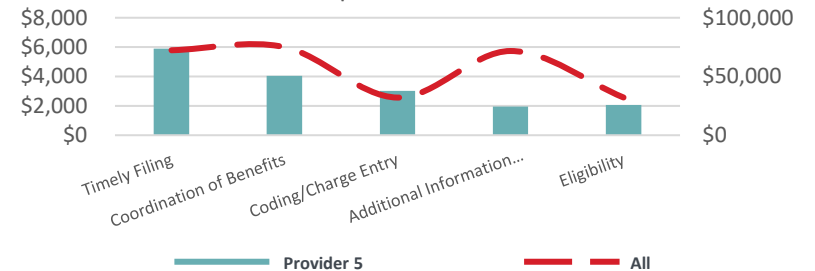
E&M Bell Curve



Same Day Cancellations and No Shows



Open Denials



| Top 12 CPT Categories | Current Month | | Monthly Average | | Past 13 Months | |
|--------------------------|---------------|-----------|-----------------|-----------|----------------|-----------|
| | Chgs (\$) | Pmts (\$) | Chgs (\$) | Pmts (\$) | Chgs (\$) | Pmts (\$) |
| Office Visits - EP | \$85,239 | \$15,445 | \$75,596 | \$14,729 | \$982,743 | \$191,482 |
| Office Visits - NP | \$54,735 | \$11,042 | \$61,714 | \$12,082 | \$802,279 | \$157,065 |
| Surgery | \$62,241 | \$12,821 | \$55,303 | \$9,244 | \$718,935 | \$120,176 |
| X-Ray | \$23,927 | \$5,212 | \$27,870 | \$5,631 | \$362,312 | \$73,203 |
| Orthotics | \$14,005 | \$10,411 | \$19,227 | \$10,205 | \$249,956 | \$132,663 |
| Injections by MD | \$7,856 | \$1,037 | \$6,234 | \$1,154 | \$81,042 | \$15,003 |
| Consultations | \$0 | \$0 | \$1,428 | \$222 | \$18,563 | \$2,884 |
| NH - SNF | \$0 | (\$32) | \$958 | \$207 | \$12,452 | \$2,689 |
| Injections Supplies Only | \$660 | \$176 | \$570 | \$251 | \$7,410 | \$3,262 |
| Miscellaneous | \$471 | \$880 | \$355 | \$255 | \$4,616 | \$3,318 |
| Home Visits | \$0 | \$0 | \$326 | \$46 | \$4,244 | \$599 |
| Hospital Visits | \$1,105 | \$0 | \$200 | \$26 | \$2,603 | \$333 |